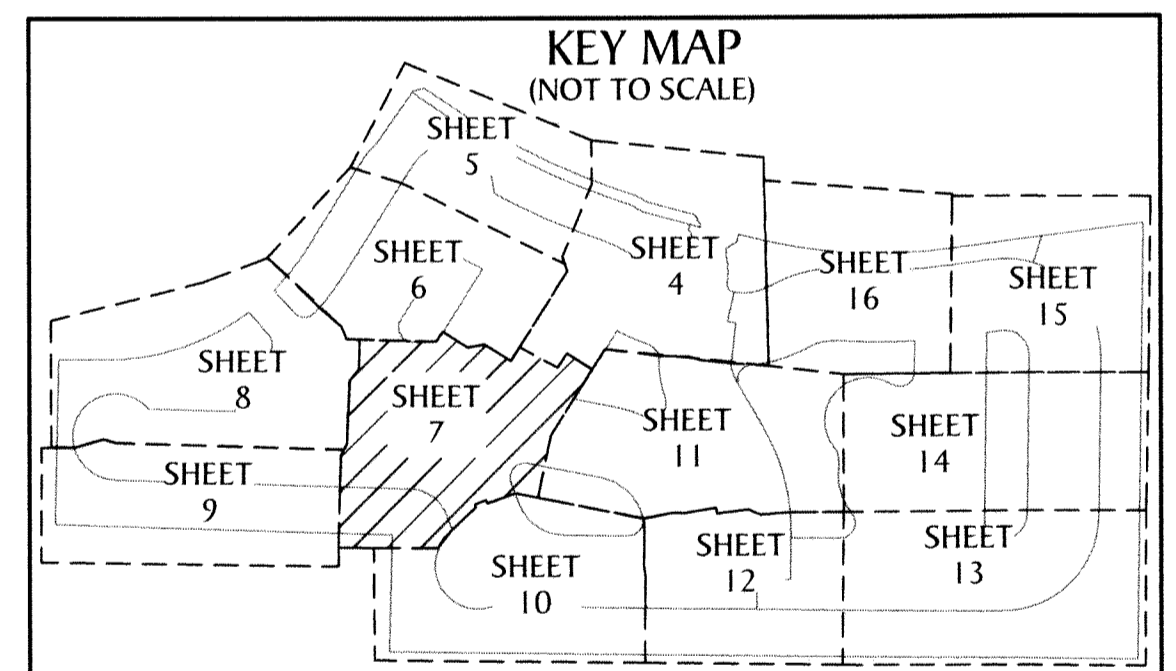
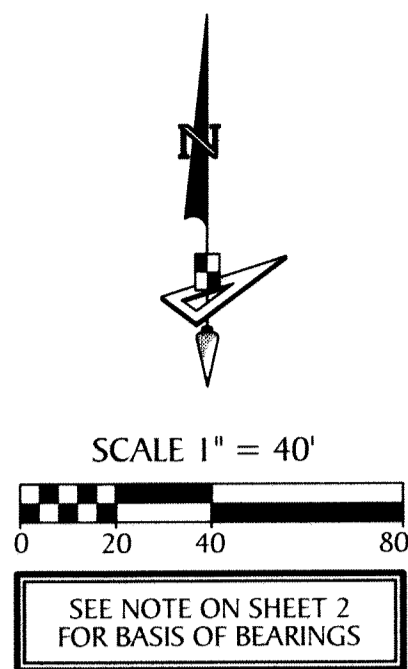


# GROVES OF WESTLAKE - PHASE I

BEING IN PART A REPLAT OF OPEN SPACE TRACT #4 AND OPEN SPACE TRACT #5, PERSIMMON BOULEVARD EAST - PLAT 2, PLAT BOOK 128, PAGES 16 THROUGH 19, INCLUSIVE, PUBLIC RECORDS OF PALM BEACH COUNTY, FLORIDA, AND BEING A PORTION OF SECTION 7, TOWNSHIP 43 SOUTH, RANGE 41 EAST AND SECTION 12, TOWNSHIP 43 SOUTH, RANGE 40 EAST, CITY OF WESTLAKE, PALM BEACH COUNTY, FLORIDA.

126



- LEGEND**
- P.O.B. ---- POINT OF BEGINNING
  - P.O.C. ---- POINT OF COMMENCEMENT
  - P.B. ---- PLAT BOOK
  - D.B. ---- DEED BOOK
  - PG./PG(S) ---- PAGE(S)
  - NAD ---- NORTH AMERICAN DATUM
  - W.M.T. ---- WATER MANAGEMENT TRACT
  - O.S.T. ---- OPEN SPACE TRACT
  - P.B.C. ---- PALM BEACH COUNTY
  - U.E. ---- UTILITY EASEMENT
  - D.E. ---- DRAINAGE EASEMENT
  - L.M.A.E. ---- LAKE MAINTENANCE ACCESS EASEMENT
  - 7-43-41 ---- SECTION-TOWNSHIP-RANGE
  - R ---- RADIUS
  - L ---- ARC LENGTH
  - Δ ---- DELTA ANGLE
  - CB ---- CHORD BEARING
  - C ---- CHORD
  - R/W ---- RIGHT-OF-WAY
  - R.P.E. ---- RURAL PARKWAY EASEMENT
  - (R) ---- RADIAL
  - (NR) ---- NON-RADIAL
  - HOA ---- HOMEOWNERS ASSOCIATION
  - S.I.D. ---- SEMINOLE IMPROVEMENT DISTRICT
  - PRM ---- PERMANENT REFERENCE MONUMENT
  - ---- PERMANENT CONTROL POINT
  - ◻ ---- FOUND PERMANENT REFERENCE MONUMENT
  - ---- SET 4"x4" CONCRETE MONUMENT WITH 2" ALUMINUM DISK STAMPED "PRM LB 7768"

**GeoPoint**  
Surveying, Inc.

4152 W. Blue Heron Blvd. Phone: (561) 444-2720  
Suite 105 www.geopointsurvey.com  
Riviera Beach, FL 33404 Licensed Business Number LB 7768

Sheet No. 7 of 16 Sheets